



Center for  
Developmental  
Services™

2022 Year in Review





# Message from Leadership

What an amazing year at CDS! As we share our results from 2022, we are happy to report that we were finally back to pre-pandemic levels in the number of children served and the number of appointment visits to our facility. After several years of unpredictability, we enjoyed the return of in-person events and outreach efforts that allowed us to reconnect with our community.

CDS had the opportunity to showcase our unique service model this past year during an episode of Bloomberg TV's "World's Greatest!..." program. It was exciting to have a television crew come to Greenville as they filmed the segment, and we were proud to watch it as it aired nationally in November.

In addition, CDS was mentioned in a recent article of the New England Journal of Medicine about how coordinated care has a positive impact on children with disabilities because providers are working together in addressing developmental challenges. This incredible media exposure validates our purpose and confirms why our mission is so important.

The collaborative care offered through CDS is a testament to our community's bold approach in serving children who have a developmental delay or disability. We are grateful for each of our donors and community champions. Your support this past year will impact our families now and for years to come. Thank you for being with us.



**Dana McConnell**  
CDS Executive Director



**Jeremy Poindexter**  
CDS Board Chair

## CDS Board Members

**Dr. William R. DeLoache**  
Chairman in Perpetuity  
Founder of CDS

**Dr. William Schmidt**  
Emeritus  
Founder of CDS

**Jeremy Poindexter**  
Chair  
Poindexter Law Firm, LLC

**Ryan Tiller**  
Vice-Chair  
Current

**Sarah West**  
Secretary/Treasurer  
REV Group

**Gerardo Cisneros**  
Current

**Debbie Dujardin**  
Remax Realty

**Mary Alice Hughes**  
Maverick Smiles Pediatric  
Dentistry

**Barbara Knight**  
First Presbyterian Church

**Thomas Kuckhoff**  
Omron Automation Americas

**Tish Lanier**  
Advantage Building Services

**Jason Misrahi**  
Stitch Street

**Johanna Perez**  
Molina Healthcare of SC

**Dominic Picciuto**  
Total Quality Logistics

**Anthony "Tony" Toklo**  
Davis-Standard



# Partners and Programs

*CDS exists to make caring for children with developmental delays and disabilities easier and more effective by linking medical and support services in a single location.*



## Prisma Health Children's Hospital

- **Developmental-Behavioral Pediatrics/Pediatric Psychology:** Provides medical and developmental evaluations as well as psychological, neuropsychological, and educational tests to develop effective care management plans in consultation with families.
- **Kidnetics:** Provides therapeutic services for children on an inpatient and outpatient basis from birth through age 21. Their comprehensive team is made up of occupational therapists, physical therapists, and speech-language pathologists. Team members work with the child's family, physician, and school to extend all therapies into the child's environment to maintain a continuum of care.
- **Wonder Center:** Provides therapeutic treatment and day care for children from birth through age 6 with medical and developmental problems requiring daily nursing care.
- **Pediatric Prosthetics and Orthotics:** Provides a full range of pediatric orthotic and prosthetic devices specifically designed for each child. Intervention may include cranial remolding, scoliosis management, and lower extremity bracing.



## Clarity

Provides speech, language and feeding evaluations and therapy, hearing and audiological evaluations and treatment, as well as psychological evaluations and counseling services to address speech, hearing, learning, social, and emotional challenges.



## KidVentures of Thrive Upstate

Provides family training and service coordination for children with developmental delays and disabilities in the child's natural environment, from birth through age 5.



## Center for Developmental Services

- **Intake:** Intake workers collect medical, psychological, education, and other vital records to help individuals gain eligibility for services from the South Carolina Department of Disabilities and Special Needs.
- **Case Management:** Case managers support people with disabilities by connecting them with resources and services through local agencies and Medicaid waivers. This program serves individuals residing in Greenville, Spartanburg, Laurens, and Pickens Counties who have intellectual and related disabilities and head and spinal cord injuries.
- **Partnership Coordination:** CDS provides community outreach, bilingual services, enrichment activities, and building management on behalf of all the partners in our 35,000 sqft facility.

# Highlights



**International media coverage** – CDS was featured on Bloomberg Television as part of the show “World’s Greatest!...”, a series showcasing the best organizations around the globe.

**CDS featured in renowned medical journal** – CDS was featured in the New England Journal of Medicine as a successful example of a facility providing integrative care for people with intellectual and developmental disabilities.

**Greenville Health Authority grant** – GHA awarded CDS with a three-year grant to expand our case management program in Greenville County to serve an additional 270 clients.

**Autumn Spooktacular** – At this fun event, children practiced their skills gained in therapy to walk or move throughout the building to various booths, communicate with volunteers, and select one toy from each booth for their goodie bags.

**Spark! For Autism** – An event was held at CDS to identify patients who qualify for this study researching the causes of autism and working to develop treatments.

**Wade Hampton High School Spirit Week** – This 7-day, energy-filled week was organized by student leaders and raised critical funding to support the programs at CDS.



## Clients Served



8,148

individuals served



76,234

total client visits

### By County

14%  
ANDERSON

6%  
PICKENS

55%  
GREENVILLE

11%  
SPARTANBURG

5%  
LAURENS

9%  
OTHER

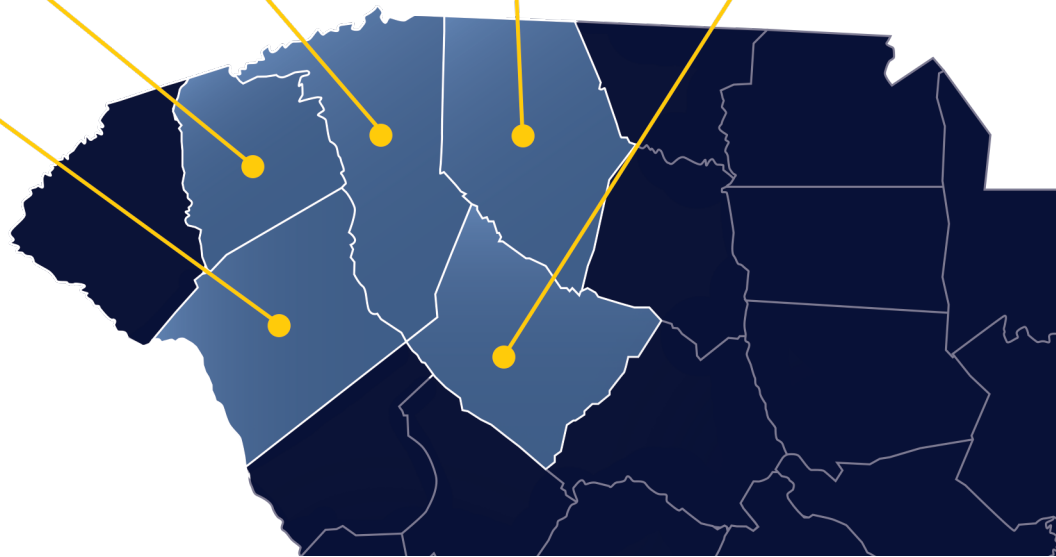
### By Age



55%  
0-5 YEARS

31%  
6-18 YEARS

14%  
19+ YEARS





# Expense Allocation



**91%**  
PROGRAM

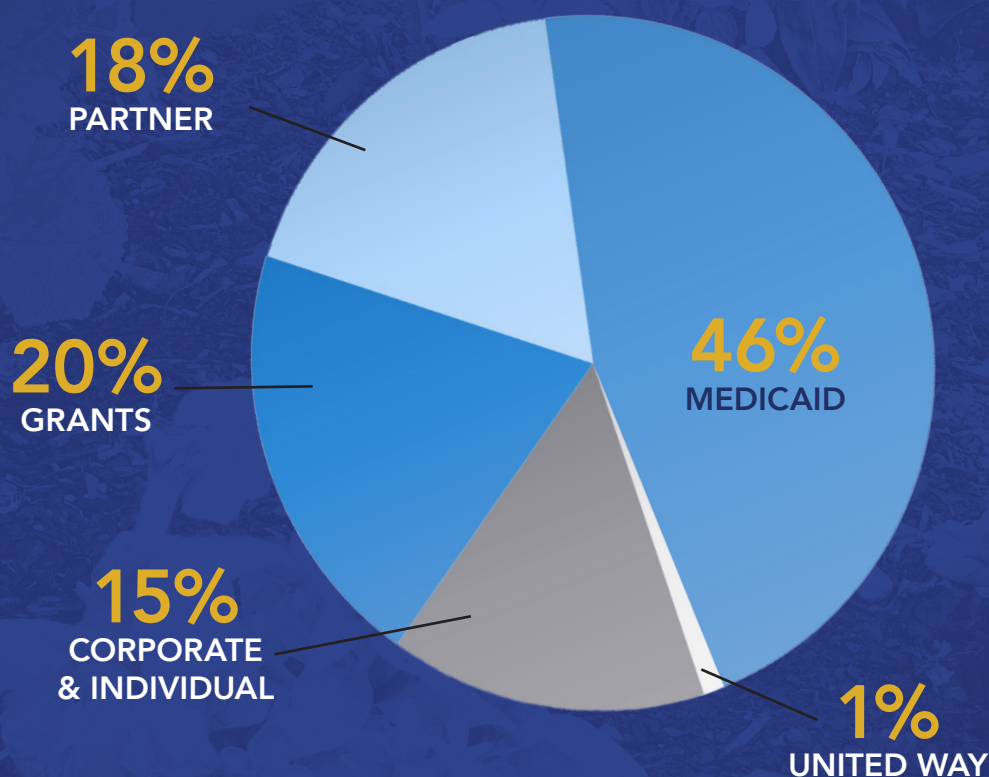


**5%**  
MANAGEMENT  
& GENERAL



**4%**  
FUNDRAISING

## Revenue Sources



## Looking Ahead

**Strategic Plan** – The CDS board, partners, and staff will create a new 5-year strategic plan that paves a path toward meeting the needs of our growing community.

**Expanding Case Management** – Using restricted funds, CDS will hire five new team members to provide care planning, referral and linkage to more individuals in Greenville who have intellectual disabilities.



# Partner Spotlight: Kidventures of Thrive Upstate

*Thrive Upstate serves over 600 individuals across the Upstate every year and has been a partner of CDS since our doors opened 23 years ago.*

Thrive Upstate is the largest and oldest provider of services to people with disabilities of all ages in Greenville County and has served our community for 70 years. Their mission is to provide all people with disabilities and special needs with meaningful services, opportunities, and support so they may thrive in life, work, and play.

## What They Do

KidVentures provides early intervention services in the child's natural environment (home, day care, or community setting), including family training and service coordination for children with developmental delays and disabilities from birth through age 5.

### Family Training

In family training, early interventionists work one-on-one with parents and caregivers to address goals established in an Individualized Family Service Plan (IFSP). This plan is customized by the parent or caregiver and builds on the strengths of the child. The early interventionist makes weekly visits to teach parents and caregivers how to enhance their child's development using the fun and spontaneity of play.

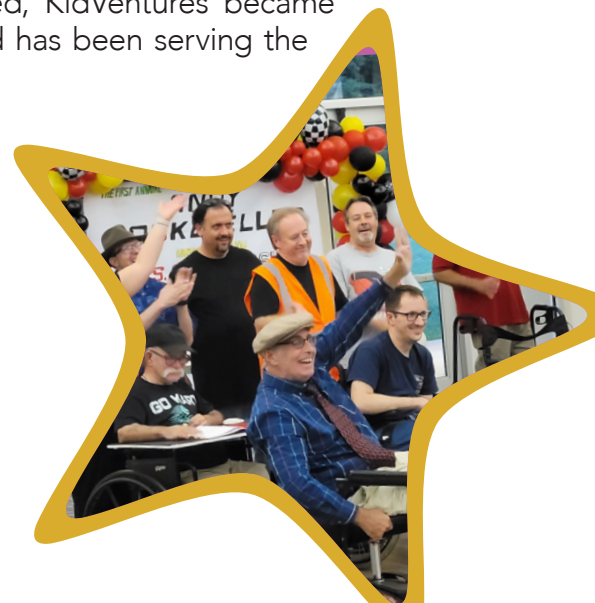
### Service Coordination

Service coordination connects families with the resources to best help their children grow and thrive. This includes referrals to community partners for additional services, help obtaining autism services, assistance transitioning to specialized preschool programs, and connections to family support groups.

When the Individuals with Disabilities Education Act was passed, KidVentures became the first provider of early intervention services in the Upstate and has been serving the community for more than 30 years.

Children are determined eligible for services by BabyNet or the South Carolina Department of Disabilities and Special Needs. Services are provided at no cost to the family.

*To learn more about Kidventures, visit  
[www.thriveupstate.org/life/kidventures](http://www.thriveupstate.org/life/kidventures).*







# A Parent's Perspective

by Jane Hart

*"Managing adult life with a child with different abilities is challenging... We are so thankful for these services that have helped her grow into the person she is today."*

When Grayson was an infant, she started having seizures. She was diagnosed with a rare genetic disorder called STXBP1 encephalopathy when she was a teenager. There are only a few hundred cases of this disorder in the world. The specialists said she would not live to see her first birthday. Grayson is now 25 years old!

We connected with CDS early in Grayson's life. She attended the Wonder Center, where she received physical and occupational therapy. This allowed me to work while she was at day care. The specialized care she received at the Wonder Center was vital to her development.

Managing adult life with a child with different abilities is challenging. We receive case management services from CDS, and Grayson's case manager makes things happen quickly. She understands the importance of the services and support I receive that help me care for Grayson.

CDS case management has connected us with services like nursing, respite, and personal care aid. Grayson currently attends Piedmont Skills Blue Ridge for support services Monday through Friday. This allows me to continue to work outside the home and have a break from caregiving responsibilities.



Grayson loves to be outside in nature. Last year, I decided to walk and push Grayson along Greenville's Swamp Rabbit Trail. She loved it so much that we kept walking. We have successfully completed walking/rolling the entire Swamp Rabbit Trail! It took us two months to complete, and we are looking forward to walking the new trail additions.

From attending the Wonder Center when she was younger to now having a case manager, Grayson has received so much support from CDS. We are so thankful for these services that have helped her grow into the person she is today.

*Do you have a CDS story you would like to share with us? We would love to hear from you! Contact Joy Blue at (864) 331-1314 or [Joy.Blue@cdservices.org](mailto:Joy.Blue@cdservices.org).*

# 2022 Donors



*CDS could not make our incredible impact in the community without donor support.  
Thank you for your generous investment in the children and families we serve.*

## **Over \$50,000**

First Presbyterian Church of  
Greenville  
Greenville Health Authority  
The Michelin Charity Golf Tournament  
Wade Hampton Spirit Week

## **\$10,000 - \$49,999**

AC Controls  
Kathleen Wall and Chuck Belding  
Debbie Dujardin Remax Moves  
ECM Foundation  
The F.W. Symmes Foundation  
John I. Smith Charities, Inc.  
Margaret Linder Southern  
Endowment Fund  
Tonya and Grover Martin  
MP Husky, LLC  
Prisma Health - Upstate Children's  
Hospital  
Reserve at Lake Keowee Charitable  
Foundation  
Jean and Bill Schmidt  
United Way of Greenville County  
Anonymous Designations  
Unum/Colonial Life

## **\$2,500 - \$9,999**

Paul C. "Bo" Aughtry III  
Barbara Stone Foundation  
Ted Bell  
Bill and Connie Timmons Foundation  
BlueCross BlueShield of South  
Carolina  
Bon Secours Mercy Health  
Bunnell Family Fund  
Dabo's All In Team Foundation  
Robin Ellenburg  
Enterprise Holding Foundation  
ITW Hartness  
Jean T. and Heyward G. Pelham  
Foundation  
Major Business Machines  
Kimberly Marshall

Pilot Inc.  
The Priestler Foundation  
Scansource Charitable Foundation  
Sealevel Systems, Inc.  
Southern First Bank  
Span-America Medical Systems, Inc.  
Terri and Brad Strange  
Carrie and Ryan Tiller  
Total Quality Logistics  
Woodward Charitable Trust

## **\$1,000 - \$2,499**

Lynn and Brian Blackburn  
Bunnell-Lammons Engineering  
Donna and Mark DeAngelis-Olthoff  
Beth Dobson  
Natalina and Jerry Ferlauto  
Jenny and Daniel Fetterolf  
Katie and Clark Gallivan  
GE Foundation Company Match  
Hunter Gibson  
Peggy and Ed Good  
Susan and Paul Grier  
Anne and Lincoln Hampshire  
Sandra Hardaway  
Holiday Sunshine Fund  
Sherry and Tee Hooper  
Sharon Jones  
Dee and John Malone  
Zach Marshall  
Dana and Eric McConnell  
McMillan Pazdan Smith, LLC  
Metro Power Electric Co. (Carolina  
Power)  
The Rother Charitable Fund  
Tracy and Aaron Shober  
Joshua Sluiter  
Kelly Smith  
South State Bank  
Jane and Bill Sykes  
Taylors Electric  
Angela and Danny Torres  
Trident Portico LLC  
UBS Company Match  
United Bank Foundation

## **\$500 - \$999**

AVL Solutions  
Lindsey and Neil Batavia  
Candice Baugher  
Beck's Blessings  
Harry Bolick  
BP Foundation  
Curtis Carr  
D&M Negron Fund  
Betty Farr  
Fluor Company Match  
Dallah Forrest  
Katie and Thomas Freeland  
Give Lively Foundation Anonymous  
Donation  
Priscilla and Johnny Hagins  
Rebekah K. Jones  
Lesa and Bill Kastler  
Katten Muchin Rosenman  
Foundation, Inc.  
Sharon and Robert King  
Barbara and Bob Knight  
Linda and Russ Kokal  
Robin Lacroix  
Bill Malesich  
Amy Milonis  
Molina Healthcare  
Jeremey Poindexter  
Nancy Powers  
Barbara and Robert Reeves  
Robert W. Baird and Co. Inc.  
Minor and Harold Shaw  
Alex Sierra  
Penny and Claude Spears  
Christina Stroud  
Lois Stroud  
Gary Sullivan  
Ann and Michael Templeton  
TQL Employees  
Jason Vaughn  
Walmart Neighborhood Market #4145  
Roberta Wetherington  
Ann and Alton Whitley  
Mele Williams  
Mary and John Wingold IV  
George Wood



### **\$250 - \$499**

Linda Albright  
Robert Austell  
Trisha and Bill Biediger  
John Blessing  
Jason Casey  
Combined Federal Campaign  
Robyn and Augustus Dicks  
Frances and David Ellison  
Winnie Gan  
Anne and David Garrett  
GE United Way Anonymous  
Designations  
General Equipment and Supply  
Georgia Eicher McConnell Estate  
Shaler Houser  
Kiwanis Club of Greenville Eastside  
Jerry Lenz  
Karen and Salem Maud  
Luke McConnell  
Jeffrey Miller  
Northwestern Mutual  
Omron Foundation Inc.  
Ginny and Joe Pazdan  
Karen Ratliff-Schaub  
Patricia and Wil Ravenhorst

Brooke and Stephen Schmidt  
Joye and Carl Schmidt  
Skydive Carolina  
St. Paul United Methodist Women of  
Easley  
Blair Stephenson  
Jennifer and Robert Stephenson  
Adrienne Talbert  
Troy Tessier  
United Chemical and Supply Co.  
Betty and Quentin Wiest

### **\$100 - \$249**

Amazon Smile  
Karinda Barrett  
Margie Bickerstaff  
Brad Blackburn  
Bradshaw, Gordon & Clinkscales, LLC  
Amy and Peter Brenner  
Chrissie and James Browning  
Haley Byrd  
Corey Cagle  
Chris Carlton  
Blake Carlton  
Marybeth Dew

Scott Dover  
Mark Egan  
Hollie Forrester  
Cody and William Fuller  
Fielding and Gally Gallivan  
Fluor United Way Anonymous  
Designations  
Justin Goddard  
Emily and Matt Gregersen  
Sandra Guadarrama  
Steve Hargis  
David Hazelhurst  
Leigh Ann and James Henson  
Pitsy Hodge  
Cornelia Horner  
Taylor and William Johnston  
Mary Jones  
Jill and Desmond Kelly  
Jessie Kendall-Marks  
Sara and Thomas Kuckhoff  
Nicholas Lee  
Jason Littleton  
James Lomax  
Maverick Smiles Pediatric Dentistry  
Rick McNulty  
Michael Meyers

## Donor Spotlight

### *AC Controls and a beloved employee, Ned Marshall*

AC Controls, an industrial equipment supplier in Charlotte, NC, has been a wonderful supporter of CDS since 2017. Over the past six years, we have enjoyed a special camaraderie with their staff during an annual golf tournament.

In March 2016, their company lost a beloved employee, Ned Marshall. Ned was a longtime salesman for AC Controls in Upstate SC providing high quality valves, instrumentation, and controls for process and combustion industry applications. Over his career, Ned was a major contributor toward not only his company's success, but also the success of their customers and vendors.

Ned loved the game of golf and he loved kids. Ned and his wife, Kim, have three children (Lindsay, Zach, and Ashley) who grew up in Greenville and now have families of their own. To celebrate Ned's life and legacy, AC Controls created an annual golf tournament that benefits CDS in his memory. According to Noah, Ned's oldest grandchild, "My Pop Pop would be proud that he is remembered in this way to help children with disabilities."

Each fall, the community is invited to participate in their golf tournament held at The Preserve at Verdae Golf Club. CDS is grateful to be part of this wonderful event, now in its seventh year. Please join us for this

year's tournament on Friday, October 20th, 2023. You can learn more at [www.cdsservices.org/event/golf](http://www.cdsservices.org/event/golf). The Marshall family and the team at AC Controls will be there to greet you as you enjoy a day on the course!



# Giving Guide

*There are many ways to support the vital work we do. We appreciate the critical investments made in our programs and future sustainability so we can be there for families who need us.*

## Unrestricted Gift

Gifts of cash, check, ACH, or credit cards mailed to us at  
29 N Academy Street or  
on our website at  
[www.cdsservices.org/donate](http://www.cdsservices.org/donate)

## Other Investments

Donors over 71 years who must take a Required Minimum Distribution can direct their funds to CDS. Life insurance policies are also accepted.

## Gifts of Stock

CDS accepts gifts of appreciated stock which allows a tax-deductible advantage at market-value. Call (864) 331-1307 for account information.

## Endowment Gift

Our endowment was established in 2019 to ensure our programs will help children for years to come.

## Bequeaths

Leaving a lasting legacy to CDS will help ensure children with developmental challenges have access to the resources they need.

## Restricted Gift

Any gift that specifically supports a requested need such as pool equipment or HVAC.

Kirby Mitchell  
Margaret Morrow  
Lynn Naparty  
Matthew Newton  
Melissa and Bart Nipert  
Laura and Steve Norman  
Frank Page  
Cynthia Pando  
Patricia and Alfred Phillips  
Laura Phillips  
Stephanie and Dominic Picciuto  
Alexander Poteat  
Elizabeth and Tony Poteat  
Brian Price  
Kathryn and Chuck Pringle  
Becky and Craig Robinson  
Steffi Romano  
Don Rumley  
Saida and Chip Russell  
Mikel-Ann and Drew Scott  
Kristy and Corey Shick  
Amy Shiflett  
Melanie and Darby Smith  
Zachary Stanton  
Janice and Patrick Sudduth  
Robert Sullivan  
W.B. Sykes, Jr.  
Stephanie and Travis Tabet  
TFBC Friendship Life Group  
Jean Turner

Lanette Ulrich  
Chase Wade  
Mollie and Jim West  
Linda Whitmire  
Cady and Thomas Williams

## Under \$100

James Adams  
Joyce and Roger Arledge  
Linda and Richard Ashmore  
Kathleen Bahri  
James Bavero  
Russell Baxley  
Sherri Berendsen  
Bryan Bishop  
Judy Brooks  
Rob Brower  
Onix Bruguera-Leon  
Steven Burzinski  
Abigail Byrd  
Brian Cabrera  
CAF America Anonymous United Way Designation  
Tyyez Carter  
Charity Gift Certificates  
Gabe Cleveland  
Gail Dalton  
Julia and Ryan Dietz  
Leighann and Robert Dill  
Emily DiNunzio  
Kara Douma  
Sydney Dunlap

Charity Edwards  
Rebecca Eiranova  
Amanda Elizabeth  
Holly Ellingworth  
Ashleigh Featherstone  
Freddie Mac Company Match  
Sandra Freeman  
Lyndi Freund  
Kendall Greer  
Hannah Guerrero  
Avery Haan  
Margaret Hendricks  
Erin Hinson  
Alan Isom  
RJ Johnson  
Hance Jones  
Stephanie Kay  
Kevin Kokal  
Amarnath Krishnamoorthy  
Martha Leekam  
Jason Long  
Angie Lovelace  
James Lynn  
Erin Maguire  
Ginnette Malay-Romkey  
Barbara Mauney  
Jason McBride  
Courtney McCarrson  
Lisa McGraw  
Gloria McPherson  
Bujar Memeti  
Anna Mills



Cathy Panagakos  
Danielle Parish  
Moti Perpinal  
Angie Perry  
Michael Phillips  
Thiago Pinheiro  
Janine and Steve Sally  
Amy Schiera  
Lura Seferian  
Liz and Joey Shands  
Chad Snipes  
Brenda Sperry  
Jennifer Sperry  
Victoria Sprance  
Robynanne and David Strickland  
Nancy Taylor  
Lyndsey Terrell Sterling  
Wendy Thacker  
Mica Tholen  
Lucy and Thomas Tiller  
Greg Trout  
Mary Varnadore  
Bill Weekes  
Lisa White  
Donnice Wilkerson  
Christine Wu  
Brandon Young  
Wilbur Younginer  
Tess Zambella  
Piotr Zwolski

#### ***In Honor of***

##### ***In Honor of Chuck Belding and Kathleen Wall***

Sandra Hardaway  
Christina Stroud

##### ***In Honor of Neill Bickerstaff*** Margie Bickerstaff

##### ***In Honor of Brian Blackburn*** Brad Blackburn

##### ***In Honor of Emma Blackburn*** Lura Seferian

##### ***In Honor of Thomas Crawford*** Dana and Eric McConnell

##### ***In Honor of Rev. Dr. and Mrs. Richard Gibbons*** Jane and Bill Sykes

##### ***In Honor of Kevin Kokal*** Linda and Russ Kokal

##### ***In Honor of Isaac Maud*** Patricia and Alfred Phillips

##### ***In Honor of Isaac, Karen, and Salem Maud*** Onix Brugueras León

##### ***In Honor of Jason Misrahi*** James Bavero Moti Perpinal

##### ***In Honor of Anna Nipert*** Roberta Wetherington

##### ***In Honor of Emma Nowell*** Margaret Hendricks

##### ***In Honor of Dr. Alfred Phillips*** Linda and Russ Kokal

##### ***In Honor of Patricia A. Phillips*** Linda and Russ Kokal

##### ***In Honor of Jeremey Poindexter*** Rob Bower                      Lisa McGraw Brian Cabrera                Michael Meyers Kara Douma                  Danielle Parish Amanda Elizabeth        Angie Perry Steve Hargis                Chase Wade RJ Johnson                  Bill Weekes Jason McBride

##### ***In Honor of Rev. Dr. and Mrs. Shelton Sanford*** Jane and Bill Sykes

##### ***In Honor of Diego Sierra*** Sandra Guadarrama

##### ***In Honor of Millie Smith*** Melanie and Darby Smith

##### ***In Honor of Jax Spears*** Penny and Claude Spears

#### ***In Memory of***

##### ***In Memory of Annie Sue Crump Bramlett*** Linda and Richard Ashmore Barbara Mauney Brenda Sperry TFBC Friendship Life Group

##### ***In Memory of Jimmy Francis*** Hunter Gibson

##### ***In Memory of Rhonda Greene*** Brooke and Stephen Schmidt Jennifer Sperry

##### ***In Memory of Caleb Gregersen*** Emily and Matt Gregersen

# Miracle Maker Society

This recognition level was established in 2012 for donors who pledge at least \$1,000 per year for 5 consecutive years. Multi-year commitments are instrumental in sustaining our operations.

#### ***Chuck Belding and Kathleen Wall***

***Lynn and Brian Blackburn***

***Marsha and Dan Bunnell***

***Sherri and Tee Hooper***

***Katie and Clark Gallivan***

***Susan and Paul Grier***

***Sharon Jones***

***Bill Malesich***

***Kimberly Marshall***

***Zach Marshall***

***Tonya and Grover Martin***

***Dana and Eric McConnell***

***Amy Milionis***

***Nancy R. Powers***

***Jean and Bill Schmidt***

***Sealevel Systems, Inc.***

***Alex Sierra***

***Kelly and Peter Smith***

***Terri and Brad Strange***

***Gary Sullivan***

***Jane and Bill Sykes***

***Adrienne Talbert***

***Taylor's Electric***

##### ***In Memory of Linda Bosler Harris*** Georgia Eicher McConnell Estate Melissa and Bart Nipert

##### ***In Memory of Marion King*** Robert King

##### ***In Memory of Tony Lindsey*** Angela and Danny Torres

##### ***In Memory of Ned Marshall*** AC Controls Robin Ellenburg

##### ***In Memory of Jane Sykes Walls*** Robert Austell



Center for  
Developmental  
Services<sup>SM</sup>

29 N. Academy Street • Greenville, SC 29601  
[www.cdservices.org](http://www.cdservices.org)

Non-Profit Org.  
U.S. Postage Paid  
Permit No. 255  
Greenville, SC



*Thank  
You*  
For your support